

LILIES PINHOLDER

Design By: Giulia Manfredini
Copyright By: Giulia Manfredini
Giulia Puntì Antichi "GPA"
www.puntiantichi.com

List of materials:

Fabric: 6" x 6" piece 40-counts natural unbleached linen from The Scarlet Letter

Threads:

- One skein each of **The Caron Collection** Waterlilies: Evergreen, Meadow, Amethyst, Midnight
- One skein of **The Caron Collection** Waterlilies: Yellow 1144
- One skein of **Needlepoint Inc.** Silk: Wine red

Beads: one package **Mill Hill** Petite Glass Beads 40557

Pinholder: from Creative Furnishing #VRP

or from Sudberry House: Small Pincushion (#15741) or Ect. Pincushion 3 3/4 (#15761)

Needle: Size 28 tapestry needle

Stitch Count: 35W x 37H

Design Area: 1 3/4" x 1 7/8" on 40 cts.

Instructions:

This model is stitched with variegated silk.

Cross stitch over two threads, with one strand of silk, following symbols in the chart. Each cross stitch must be completed before starting a new one in order to enhance the variation of colors.

Backstitch over two threads, using one strand of silk, stems and leaves with Midnight, flowers with Vine Red. Work long stitch for pistils of flowers, using one strand of Soie Cristale 1144. Attach beads using one strand of Soie Cristale 1144 and a cross stitch.

ADDITIONAL NOTES:

When you mount the stitched piece, it might turn out very useful to damp the linen in order to model the fabric around the shape of the pinholder. I would advise you to keep your hands clean while you stitch and use a special hand cream, like *Au Ver A Soie*, before starting stitching. I am sure you will enjoy this fascinating adventure with variegated silk threads and you will find this experience unexpected and unforgettable. I always try to explain my pieces in a detailed way but in case you need any help, please write or e-mail me. Have fun and thanks for loving my designs!

Giulia Puntì Antichi GPA

Via Palestro 16

54100 Massa ITALY

www.puntiantichi.com

info@puntiantichi.com

Credits:

The CARON Collection

55 Old South Avenue

Stratford, CT 06615 USA

www.caron-net.com

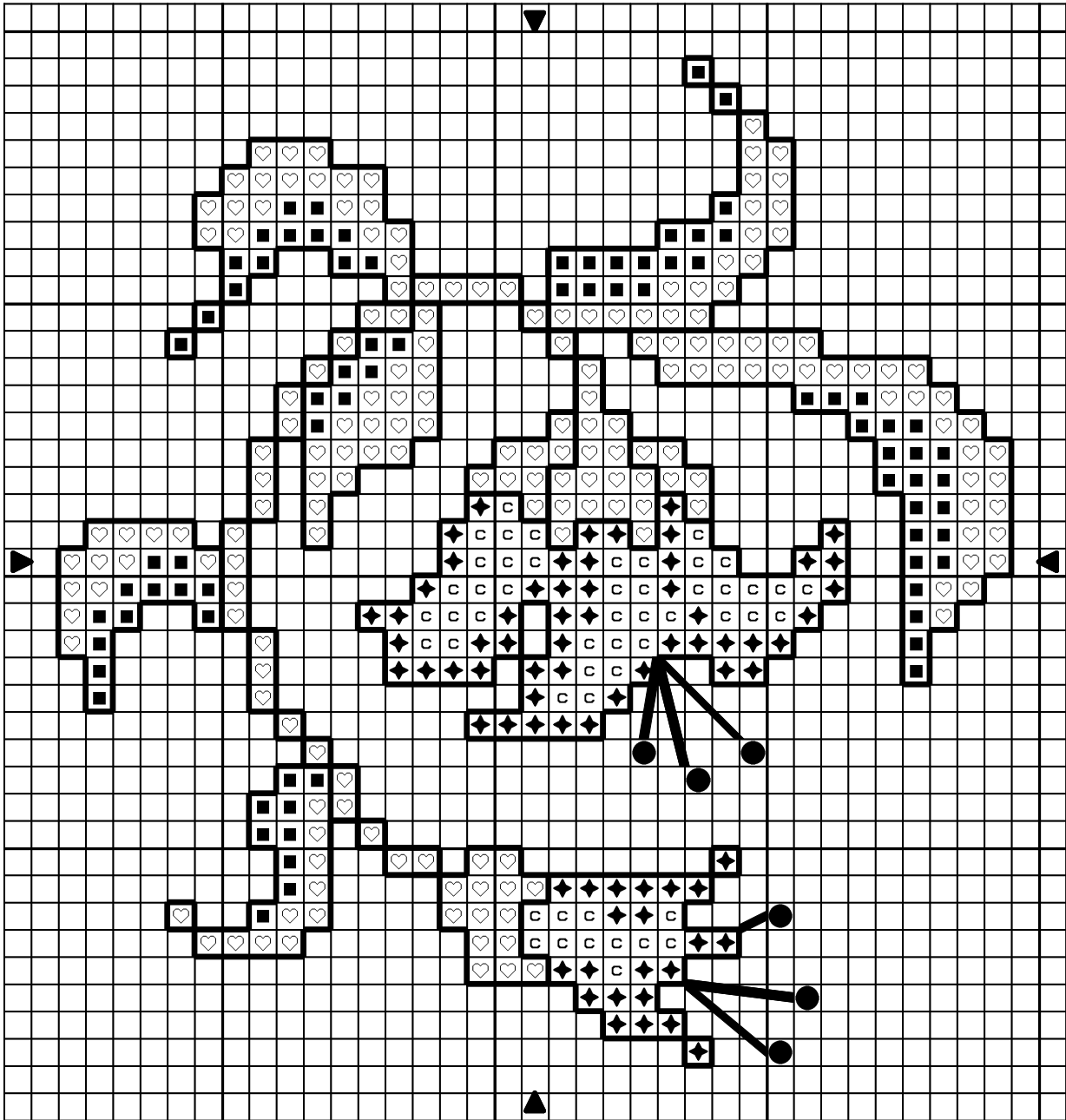
Needlepoint Inc.

275 Post Street

San Francisco, CA 94108 USA

www.needlepointinc.com

Lilies Pinholder



Design By: Giulia Manfredini

Copyright © Giulia Puntì Antichi GPA www.puntiantichi.com

- | | |
|---|---------------------------------|
| ◻ 006 Amethyst Waterlilies | ————— 1144 Yellow Soie Cristale |
| ♡ 121 Evergreen Waterlilies | ————— 072 Midnight Waterlilies |
| ■ 003 Meadow Waterlilies | ————— Wine Red |
| ◆ Wine Red | |
| ● Mill Hill Petite Glass Beads 40557 Gold | |